

# Weed It and Reap

**FRANKLIN COUNTY  
COOPERATIVE EXTENSION  
MARCH 2025 NEWSLETTER**



## Mini Greenhouses are a Great Tool for Gardeners

Source: Rick Durham, Department of Horticulture Extension Professor

Looking to get a jump on your garden this year? Even if the temperatures haven't soared into the typical "planting season" range yet, you don't have to wait to start growing some of your favorite vegetables. Many cool-season veggies like radishes, spinach, cabbage, broccoli, lettuce and onions can be planted in Kentucky from mid-March to early April. These hardy varieties can handle a bit of frost, making them a perfect choice for early spring gardening. However, another useful technique for getting a head start is creating a mini greenhouse in your garden bed.

Before you jump in, make sure to prep your soil by turning it over or lightly tilling it. Next, for a couple of weeks, lay some black plastic film over the area you plan to plant. The black plastic works like a cozy blanket for your soil, soaking up the sun's warmth and helping the earth underneath to heat up faster.

*(Continued on pg. 2)*

### IN THIS ISSUE

<b>MINI GREENHOUSES ARE A GREAT TOOL FOR GARDENERS . . . . .</b>	<b>1-2</b>
<b>CAEMG PLANT MARKET. . . . .</b>	<b>3</b>
<b>2025 FAIR EXHIBITS – GARDEN &amp; FLOWER SHOW DIVISION. . . . .</b>	<b>4-8</b>
<b>BACKYARD CONSERVATION . . . . .</b>	<b>9</b>
<b>SPRING CLEAN UP. . . . .</b>	<b>10</b>
<b>SPRING GARDEN KIT GIVEAWAY. . . . .</b>	<b>11</b>
<b>REFOREST FRANKFORT. . . . .</b>	<b>12</b>
<b>EASY CUT FLOWERS FROM SEEDS . . . . .</b>	<b>13</b>
<b>FARM CITY FIELD DAY . . . . .</b>	<b>14</b>
<b>2025 MARKET SEASON . . . . .</b>	<b>15</b>
<b>2025 FRANKLIN COUNTY SPRING CLEAN. . . . .</b>	<b>16</b>
<b>VEGETABLE GARDENERS CALENDAR . . . . .</b>	<b>17</b>
<b>WHAT IS A TREE? . . . . .</b>	<b>19</b>
<b>LEAN GREEN LETTUCE TACOS. . . . .</b>	<b>20</b>

*(Continued from pg. 1, Mini Greenhouses are a Great Tool for Gardeners)*

By the time you're ready to sow seeds or transplant your young plants, the soil will be a few degrees warmer—just enough to give those early vegetables a significant advantage.

Once the soil is warmed, remove the black plastic and get your plants in the ground. After planting, you'll want to build a simple frame around your garden bed. You can use wood, metal, or even PVC pipe—whatever you have handy. Cover the frame with clear polyethylene film to form your mini greenhouse. Weigh down the edges of the film with boards, bricks or stones so it won't blow away in the wind but will still allow easy access to the plants inside. This clear cover protects tender plants from chilly spring temperatures while still letting in that valuable sunlight.



Of course, plants still need air circulation and watering, so remember that you'll have to check on them regularly. On warm, sunny days, it's crucial to lift part of the plastic cover to let fresh air in; otherwise, your mini greenhouse could overheat. Remember to secure the cover to the ground again on cold nights.

Using this covering strategy can extend your growing season by a month or even six weeks on both ends, meaning you'll start gardening earlier in the spring and keep going later into the fall. (There is no need for the black plastic soil pre-treatment for fall planting.) In fact, if Kentucky's climate stays mild, some tough cool-season crops like spinach may stay alive throughout winter under this protective setup but may be damaged if temperatures drop to the single digits or below. Better yet, once you remove the plastic as warm weather arrives, you can use the same bed for summer crops like tomatoes or peppers—just remember they need plenty of time to mature if you're planning another round of production under plastic in the fall.

**Capital Area Extension  
Master Gardeners'**

# Plant Market

**Saturday, April 26**

**9 am - 1 pm**

**Lakeview Park  
Farm Bureau Pavilion**

**118 Park Avenue  
Frankfort, KY**



Kentucky Extension  
Master Gardener

COOPERATIVE EXTENSION  
University of Kentucky  
College of Agriculture, Food and Environment



Franklin County

**FAIR**

and Horse Show

**Exhibits****July 15-19****Garden Division***Sponsored by The Capital Area Master Gardeners***Class 14  
ADULT GARDEN****Prizes: First-\$6.00; Second-\$4.00; Third-\$2.00****Best of Show - Adult Garden – Medallion & \$25****Purple Ribbon & \$25 for most points:****Blue - 4 points, Red - 3 points, White - 2 points****Purple Ribbon & \$15 for Best Vegetable Exhibit****Purple Ribbon & \$10 for Best Herb Display****Open Garden Rules:**

- One entry per person per lot.
- All exhibits must be home or farm grown by the exhibitor.
- All exhibits must be displayed on a 9" white paper plate.

14001. Beans, Green Bunch (*plate of 12*), round or oval pods  
 14002. Beans, Other Fresh or Dried  
 14003. Beets, topped (*plate of 3*)  
 14004. Cabbage, Green (*1 head*)  
 14005. Cabbage, largest  
 14006. Corn, non-shucked (*3 ears*)  
 14007. Cucumbers, slicing (*3*)



14008. Cucumbers, pickling (*3*)  
 14009. Eggplant (*3*)  
 14010. Okra (*plate of 6*)  
 14011. Onions, White (*5, top trimmed, not peeled*)  
 14012. Onions, Yellow (*5, top trimmed, not peeled*)  
 14013. Peppers, Banana (*5*)  
 14014. Peppers, Bell (*3*)  
 14015. Peppers, Hot (*5*)  
 14016. Potatoes, Irish (*5*)

*(Continued on pg. 4-8)*

- 14017. Potatoes, Red (5)
- 14018. Rhubarb, stalks only, leaf removed (3)
- 14019. Tomatoes, Red Slicing (3)
- 14020. Tomatoes, Yellow Slicing (3)
- 14021. Tomatoes, Red Miniature Varietal (i.e., Cherry, Pear) (5)
- 14022. Tomatoes, Yellow Miniature Varietal (i.e., Cherry, Pear) (5)
- 14023. Tomatoes, Heirloom (3)
- 14024. Squash, Yellow, Summer (3)
- 14025. Squash, Zucchini (3)
- 14026. Swiss Chard (1 variety, 3 leaves)
- 14027. Kale (1 variety, 3 leaves)
- 14028. Herbs, Mint (1 variety/vase, 5 stems)
- 14029. Herbs, Lavender (1 variety/vase, 5 stems)
- 14030. Herbs, Basil (1 variety/vase, 5 stems)
- 14031. Herbs, Oregano (1 variety/vase, 5 stems)
- 14032. Herbs, Parsley (1 variety/vase, 5 stems)
- 14033. Herbs, Rosemary (1 variety/vase, 5 stems)
- 14034. Herbs, Thyme (1 variety/vase, 5 stems)
- 14035. Herbs, Any Other (1 variety/vase, 5 stems)
- 14037. Garlic (3 cloves, not peeled)
- 14038. Watermelon (1 large)
- 14039. Melons, Other (i.e. cantaloupe, muskmelons, etc.)
- 14040. Blackberries (12 berries on plate)
- 14041. Blueberries (12 berries on plate)
- 14042. Raspberries (12 berries on plate)
- 14043. Miscellaneous, any other variety not mentioned above
- 14044. Vegetable Critter (single vegetable)
- 14045. Ugliest Vegetable (odd shape, grown naturally)
- 14046. Smallest Mature Vegetable
- 14047. Largest Vegetable (by weight)
- 14048. Most Unusual Vegetable

**ADULT GARDEN OVERALL**

- 14095. Herbs, Fresh Display (min. 4 varieties/1 vase, 2 stems each) Purple Ribbon
- 14096. Vegetable Exhibit (minimum of 6 different vegetables) Purple Ribbon
- 14097. Most Points Awarded Ribbon - Purple Ribbon - Adult Garden
- 14098. Best of Show Medallion - Adult Garden



Class 15  
**YOUTH GARDEN**  
(5-18 years of age)

**Prizes: First-\$6.00; Second-\$4.00; Third-\$2.00**  
**Best of Show - Youth Garden – Medallion & \$25**  
**Purple Ribbon & \$25**  
**for most points:**  
**Blue - 4 points, Red - 3 points, White - 2 points**  
**Purple Ribbon & \$15 for Best Vegetable Exhibit**  
**Purple Ribbon & \$10 for Best Herb Display**

**Youth Garden Rules:**

- Exhibitor MUST be 5-18 years of age.
- One entry per person per lot.
- All exhibits must be home or farm grown by the exhibitor.
- All exhibits must be displayed on a 9" white paper plate.

- 15001. Beans, Green Bunch (plate of 12), round or oval pods
- 15002. Beans, Other Fresh or Dried
- 15003. Beets, topped (plate of 3)
- 15004. Cabbage, Green (1 head)
- 15005. Cabbage, largest
- 15006. Corn, non-shucked (3 ears)
- 15007. Cucumbers, slicing (3)
- 15008. Cucumbers, pickling (3)
- 15009. Eggplant (3)
- 15010. Okra (plate of 6)
- 15011. Onions, White (5, top trimmed, not peeled)
- 15012. Onions, Yellow (5, top trimmed, not peeled)
- 15013. Peppers, Banana (5)
- 15014. Peppers, Bell, one variety per plate (3)
- 15015. Peppers, Hot (5)
- 15016. Potatoes, Irish (5)
- 15017. Potatoes, Red (5)
- 15018. Rhubarb, stalks only, leaf removed (3)
- 15019. Tomatoes, Red Slicing (4)
- 15020. Tomatoes, Yellow Slicing (4)
- 15021. Tomatoes, Red Miniature Varietal (i.e., Cherry, Pear) (5)
- 15022. Tomatoes, Yellow Miniature Varietal (i.e., Cherry, Pear) (5)
- 15023. Tomatoes, Heirloom (4)
- 15024. Squash, Yellow, Summer (3)
- 15025. Squash, Zucchini (3)



- |        |   |                             |  |
|--------|---|-----------------------------|--|
| 15026. | Swiss Chard (1 variety, 3 leaves)                 | 15042.                      | Raspberries (1 pint on plate)  |
| 15027. | Kale (1 variety, 3 leaves)                        | 15043.                      | Miscellaneous, any other variety not mentioned above                       |
| 15028. | Herbs, Mint (1 variety/vase, 5 stems)             | 15044.                      | Vegetable Critter (single vegetable)                                       |
| 15029. | Herbs, Lavender (1 variety/vase, 5 stems)         | 15045.                      | Ugliest Vegetable (odd shape, grown naturally)                             |
| 15030. | Herbs, Basil (1 variety/vase, 5 stems)            | 15046.                      | Smallest Mature Vegetable  |
| 15031. | Herbs, Oregano (1 variety/vase, 5 stems)          | 15047.                      | Largest Vegetable (by weight)  |
| 15032. | Herbs, Parsley (1 variety/vase, 5 stems)          | 15048.                      | Most Unusual Vegetable   |
| 15033. | Herbs, Rosemary (1 variety/vase, 5 stems)         |                             |  |
| 15034. | Herbs, Thyme (1 variety/vase, 5 stems)            | <b>YOUTH GARDEN OVERALL</b> |  |
| 15035. | Herbs, Any Other (1 variety/vase, 5 stems)        | 15095.                      | Herbs, Fresh Display (min. 4 varieties/1 vase, 2 stems each) Purple Ribbon |
| 15037. | Garlic (3 cloves, not peeled)                     | 15096.                      | Vegetable Exhibit (min. 6 different vegetables) Purple Ribbon              |
| 15038. | Watermelon (1 large)                              | 15097.                      | Most Points Awarded - Purple Ribbon – Youth Garden                         |
| 15039. | Melons, Other (i.e. cantaloupe, muskmelons, etc.) | 15098.                      | Best of Show Medallion - Youth Garden                                      |
| 15040. | Blackberries (1 pint on plate)                    |                             |  |
| 15041. | Blueberries (1 pint on plate)                     |                             |  |

## Time to start making a list of things to enter in this year's Exhibit Hall!!

### Exhibiting Fruits & Vegetables

Do you know what characteristics make a vegetable one of high quality? Do you know which vegetables to choose for exhibition? Do you know how to prepare a vegetable for exhibiting? Vegetables will be evaluated on five different criteria: condition, quality, uniformity, true-to-typeness, and size.

**Condition** will carry 25 percent of the total score for the exhibit. Points will be lost when disease or insect damage is evident on any part of the specimen. Produce which has been improperly washed and/or poorly prepared (trimmed) will also lose points. Certain produce will have a delicate, powdery coating called "bloom" which is considered desirable. Too much handling or washing will remove the bloom and result in a loss of points. Mechanical injury can happen at any time. It can happen before harvesting, but generally happens in picking or transporting the produce. It is always a good idea to bring a few extra specimens which can be put out at the last minute if one of the better ones has been damaged.

**Quality** will carry 20 percent of the total score for the exhibit. It is important that the produce not be overripe or underripe. It should be at the perfect stage for eating. Also, it should not be wilted or shriveled, rough or misshapen. The exhibit consisting of the most attractive specimens will receive the highest mark.

**Uniformity** will carry 20 percent of the total score

for the exhibit. If there are five specimens in an exhibit they should all look the same. They should be of the same size, shape, color, quality, condition, degree of maturity and be prepared in the same manner. Most first-time exhibitors lose points in this area more than any other area.

**True-to-typeness** will carry 20 percent of the total score for the exhibit. Each variety of a given vegetable will have certain characteristics which make it different from other varieties of the same vegetable. Some of these differences are shape, size and color. For instance, many different shades of red and even a few shades of yellow are found in different varieties of tomato. One is not necessarily better than another if both shades are characteristic of their variety. However, a variety which may be known for later ripening will lose points under quality if it is not yet to the proper stage of ripeness.

**Size** of the produce will carry 15 percent of the total score for the exhibit. The exhibiting of vegetables is not a contest to see who has grown the biggest specimen. Likewise, the "cutest" (smallest) specimens should be left at home. Some vegetables, such as tomatoes, have varieties which are very small and are often included in a separate class.

Exhibits of vegetables, having the incorrect number of entries or the wrong type(s) of entries, will be moved to last place. For an exhibit to receive a blue ribbon, it must score very high in all five areas, have the correct number of specimens and be properly prepared.

# Flower Show Division

Class 20  
**FLOWER SHOW**  
*“Passing the Torch”*

**Sponsored by the Franklin County  
 Council of Garden Clubs**

Franklin County Extension Office – Lower Level

## ENTRIES

All Flower Show exhibitors are to register at the lower level of the Franklin County Extension Office.

Friday, July 19: 8:00 - 11:00 a.m.

## VIEWING

Friday, July 19: 2:00 - 5:00 p.m.

## REMOVAL OF ENTRIES

Friday, July 19: 5:00 - 5:30 p.m.

**JUDGING** will be done by panels of accredited Flower Show Judges, accredited Society Judges, and/or experts in the field of horticulture. The signature of one judge must be written on every Blue Ribbon exhibit card. All decisions of the Judges shall be final.

## **General Rules and Regulations:**

1. Avoid disqualification by reading the schedule carefully.
2. All Flower Show exhibitors must register at the lower level of the Franklin County Extension Office before presenting entries for placement.
3. Entries will be received from 8:00 a.m. to 11:00 a.m. Friday, July 19, 2024. Entries will close promptly at 11:00 a.m. Late entries will not be judged but may be placed on display.
4. Bring address labels for each item to be entered (1"x3" maximum size)
5. Judging will begin at 12:00 noon the day of the show.
6. All decisions of the Judges shall be final.
7. Entries may not be removed before 5:00 p.m., Friday, July 19, 2024. All entries are to be removed by 5:30 p.m. Any entries not removed by 5:30 p.m. will be disposed of by the committee.
8. The committee may subdivide Horticulture Division classes by cultivar, type and/or color.
9. Horticulture entries shall not be allowed in "any other" classification if there is a provided class.
10. It is unlawful to remove native plants from any public land in Kentucky. In addition, federally listed endangered plants for Kentucky will not be allowed, including, but not limited to: *Arabis perstella* (Braun's Rock Cress), *Mnuaia cumberlandensis* (Cumberland Sandwort), *Schealbea Americana* (Chaffseed), *Solidago shorti* (Short's Goldenrod), and *Trifolium stoloniferum* (Running Buffalo Clover).
11. *Euonymus alatus* (Burning Bush) and *Lythrum salicaria* (Purple Loosestrife) are exotic invasive plants and will not be allowed in arrangements or as horticulture specimens as well as other invasive species on the Kentucky severe threatened list.
12. Exhibitors are allowed to exhibit in the Flower Show Youth Division if they are between the ages of 5 and 18 as of July 1.



13. General Rules and Regulations apply to the Youth Division.

## **Awards**

One (1) Blue – First Place, one (1) Red – Second Place, and one (1) Yellow ribbon – Third Place, and up to three (3) White ribbons – Honorable Mention may be given in each class, if merited.

In the Adult Division, there will be one Best of Show in Design and one Best of Show in Horticulture.

## **Division I – Floral Design** **“Summer Light”**

### **Design Rules:**

- Exhibitor may enter only one (1) entry in each CLASS.
- Landscapes or scenes are not permitted.
- No artificial flowers, fruit or foliage are to be used.
- Plant material does NOT have to be grown by the exhibitor.
- Accessories are permitted with all designs.
- Designs in Section I, 20001, 20002, 20003 are not to exceed 32" width.
- Must note on a card all plant material used in design.
- All designs are Designer's Choice.

### **Judging Scale of Points**

Conformance ( <i>design type 7 pts &amp; requirements 7 pts</i> ):	14 pts
Design Principles ( <i>each principle worth 8 pts</i> ):	48 pts
Selection of Components:	8 pts
Organization of Components:	8 pts
Expression ( <i>Interpretation of class title or theme</i> ):	8 pts
Distinction ( <i>marked superiority in all respects</i> ):	<u>14 pts</u>
<b>Total:</b>	<b>100 pts</b>



**Design Section I**

20001. "Light Up the 4th" (*Illuminary Design*)  
 20002. "Picnic Under the Stars" (*Reflective Design*)  
 20003. "Dawn's Early Light" (*Creative Design*)

**Design Section II**

20004. "Design in a Kitchen Container ... vintage or modern"  
 20005. "Arrangement in a Basket"  
 20006. "Arrangement using a Colorful Medley of Vegetables"  
 20007. "A Decorated Napkin Ring"

## Division II – Horticulture

### "Ring of Blooms"

**Horticulture Rules:**

- All entries in the Horticulture Division must be grown by the exhibitor.
- All specimens including container-grown plants must have been in the care and possession of the exhibitor for no fewer than 90 days or grown from seeds, cuttings, or immature plants.
- Exhibitor may place as many entries as desired in the Horticulture Division, and may enter up to three entries of a different variety or color in each class.
- Entries in the Horticulture Division must be shown in appropriately sized transparent bottles provided by the exhibitor. Bubble wrap, clear plastic wrap or other unobtrusive material may be used as wedging.
- Specimens should have no foliage below the water line. (Gladiolus is an exception)

**Scale of Points (Cut or Container Specimens)**

Conformance:	5 pts
Plant Identification:	5 pts
Peak of Perfection ( <i>form 20, color 20, maturity 20, condition/blemishes 15</i> ):	75 pts
Grooming ( <i>10 pts</i> )/Staging ( <i>5 pts</i> ):	15 pts
Total:	100 pts

**Section A – Rosa (Rose)****Stem length in proportion to bloom**

20006. Single Bloom  
 20007. Single Miniature Bloom  
 20008. Spray  
 20009. Miniature Spray

**Section B – Flowering Annuals****One stem, scape or spray**

20010. Antirrhium (*Snapdragon*)  
 20011. Celosia  
 20012. Cleome (*Spider Flower*)  
 20013. Cosmos  
 20014. Helianthus (*Sunflower*)  
 20015. Tagetes (*Marigold*)  
 20016. Zinnia (*classes may be subdivided*)  
 20017. Any other worthy flowering annual

**Section C – Foliage Annuals****One stem or spray**

20018. *Centaurea cineraria* (*Dusty Miller*)  
 20019. Coleus  
 20020. Any other worthy foliage annual

**Section D – Flowering Perennials****One stem, scape or spray**

20021. Echinacea (*Coneflower*)  
 20022. *Hemerocallis* (*Daylily*) – Single  
 20023. *Hemerocallis* (*Daylily*) – Double  
 20024. *Hemerocallis* (*Daylily*) – Spider  
 20025. *Hemerocallis* (*Daylily*) – Other forms  
 20026. *Hibiscus*  
 20027. *Monarda* (*Bee Balm*)  
 20028. Any other worthy Flowering Perennial

**Section E – Foliage Perennials****One stem, scape or spray**

20029. Hardy Ferns  
 20030. *Hosta* (*Plaintain Lily*) – Large (*more than 6" across, 64 to 120 square inch area*)  
 20031. *Hosta* (*Plaintain Lily*) – Medium (*less than 6" across, 30 to 64 square inch area*)  
 20032. *Hosta* (*Plaintain Lily*) – Small (*less than 3" across, less than 30 square inch area*)  
 20033. *Hosta* (*Plaintain Lily*) – Miniature (*less than 6 square inch area*)  
 20034. Any other worthy specimen of foliage perennial

**Section F – Flowering Bulbs, Corms, Rhizomes, Tubers****One stem, scape or spray**

20035. *Canna*  
 20036. *Dahlia*  
 20037. *Gladiolus*  
 20038. *Lilium* (*Asiatic Lily*)  
 20039. *Zantedeschia* (*Calla Lily*)  
 20040. Any other worthy specimen of flowering bulb, corm, rhizome, or tuber

**Section G – Foliage Bulbs, Corms, Rhizomes, Tubers****One stem, scape or spray**

20041. *Caladium* (*Fancy Leaf*)  
 20042. Any other worthy specimen of foliage bulb, corm, rhizome, or tuber

**Section H – Flowering Shrubs****Stem or branch NOT to exceed 30" length**

20043. *Hydrangea*  
 20044. Any other worthy specimen of flowering arboreal



**Section I – Container Grown Foliage**

– *maximum 10 inches diameter, double potting permitted*

20045. Container Grown Foliage Plant

**Section J – Container Grown Flowering Plant**

– *maximum 10 inches diameter, double potting permitted*

20048. Container Grown Flowering Plant

**Division III – Education**

“Faster, Higher, Stronger – the Olympic Motto”

**Exhibit 1**

20060. “Planting by the Signs of the Moon”

**Exhibit 2**

20062. “Plant Natives”

Class 21

**Division IV – Youth Inspired**

**AGE GROUPS**

- A. Ages 5-7, Juniors
- B. Ages 8-12, Intermediates
- C. Ages 13-18, High School

Follow entry rules for adults.

Be prepared to label your entry.

**Youth Design: “Paris, this Summer”**

- 21001. Saturday Morning Cartoons [Age Group A]
- 21002. Tell Us About Your Superhero [Age Group B]
- 21003. Prom Bouquet ... Save a Dance for Me [Age Group C]

**Youth Horticulture: “Here’s What I Grew”****Flowering Annuals [Age Group A]**

*One stem, scape or spray*

- 21005. Marigold
- 21006. Zinnia
- 21007. Sunflower
- 21008. Any other worthy Flowering Annual

**Flowering Annuals [Age Group B]**

*One stem, scape or spray*

- 21009. Marigold
- 21010. Zinnia
- 21011. Sunflower
- 21012. Any other worthy Flowering Annual

**Flowering Annuals [Age Group C]**

*One stem, scape or spray*

- 21013. Marigold
- 21014. Zinnia
- 21015. Sunflower
- 21016. Any other worthy Flowering Annual





# Franklin County Conservation District

BACKYARD CONSERVATION PROGRAM  
Urban Cost Share Program

**January 1, 2025 to June 1, 2025**

Raised Garden Beds, Rain Barrels, Compost Bins,  
Pollinator Gardens and Beehives

- First come, first serve.
- Franklin County Residents only
- One application per household
- 50% cost share up to \$250 maximum

**Must have approval before you  
begin project**



Franklin County Conservation District  
103 Lakeview Court  
Frankfort, KY 40601  
502-352-2701

fccd103@gmail.com



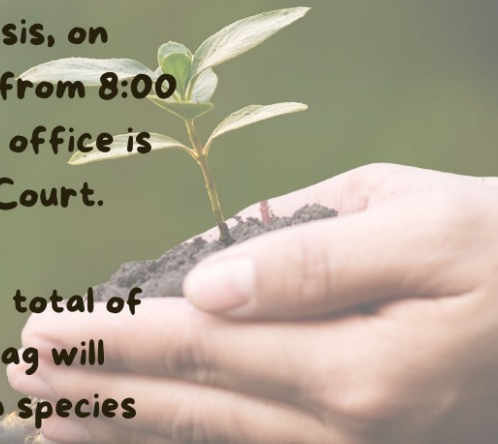
# FREE TREE SEEDLINGS

**One Day Only - March 19, 2025**

Tree Seedlings will be given away at the Franklin County Conservation District office, on a first come basis, on Wednesday, March 19, 2025, from 8:00 am until supply is gone. The office is located at 103 Lakeview Court.

Individuals will be limited to a total of ten tree bags only - each bag will consist of two trees of each species

Chinese Chestnut, Chinkapin Oak, Flowering Dogwood, Pawpaw, Pecan, Persimmon, Pin Oak, Red Shumard Oak, White Oak and White Pine



# GARDENING Spring Clean Up



Celebrate the *first day of spring* by helping us in the garden!

**Thursday March 20th**

**10 AM - 12 PM**

OR

**2 PM-4 PM**

Pre-Registration appreciated at [gardens@libertyhall.org](mailto:gardens@libertyhall.org)







# SPRING GARDEN KIT GIVEAWAY MARCH 26

**IN-PERSON TALK AT NOON:  
SPRING GARDENING FOR BEGINNERS**

Pickup from 8 AM - 6 PM

- Plants
- Handouts
- Seeds
- Video

**QUANTITIES  
ARE LIMITED**

**REGISTRATION  
IS NOT  
REQUIRED**

**502-695-9035**

**101 Lakeview Court, Frankfort KY**

**Cooperative  
Extension Service**

Agriculture and Natural Resources  
Family and Consumer Sciences  
4-H Youth Development  
Community and Economic Development

**MARTIN-GATTON COLLEGE OF AGRICULTURE, FOOD AND ENVIRONMENT**

Educational programs of Kentucky Cooperative Extension serve all people regardless of economic or social status and will not discriminate on the basis of race, color, ethnic origin, national origin, creed, religion, political belief, sex, sexual orientation, gender identity, gender expression, pregnancy, marital status, genetic information, age, veteran status, physical or mental disability or reprisal or retaliation for prior civil rights activity. Reasonable accommodation of disability may be available with prior notice. Program information may be made available in languages other than English. University of Kentucky, Kentucky State University, U.S. Department of Agriculture, and Kentucky Counties, Cooperating. Lexington, KY 40506



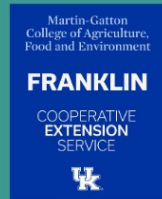




# Reforest Frankfort 2025

**SATURDAY, APRIL 12 | 9 AM - 1 PM**  
**RIVERVIEW PARK**  
**404 WILKINSON BLVD**

Join us for tree planting, free food & music,  
 urban forestry and eco art along the banks of  
 our Kentucky River!





# Easy Cut Flowers From Seed



**Wednesday, April 16  
6 PM**

**This class will cover the basics for easy-to-grow flowers, perfect for creating stunning bouquets from your garden.**

**RSVP:**

**502-695-9035 or  
franklin.ext@uky.edu**

**101 Lakeview Court  
Frankfort, KY**

**Cooperative  
Extension Service**

Agriculture and Natural Resources  
Family and Consumer Sciences  
4-H Youth Development  
Community and Economic Development

**MARTIN-GATTON COLLEGE OF AGRICULTURE, FOOD AND ENVIRONMENT**

Educational programs of Kentucky Cooperative Extension serve all people regardless of economic or social status and will not discriminate on the basis of race, color, ethnic origin, national origin, creed, religion, political belief, sex, sexual orientation, gender identity, gender expression, pregnancy, marital status, genetic information, age, veteran status, physical or mental disability or reprisal or retaliation for prior civil rights activity. Reasonable accommodation of disability may be available with prior notice. Program information may be made available in languages other than English. University of Kentucky, Kentucky State University, U.S. Department of Agriculture, and Kentucky Counties, Cooperating. Lexington, KY 40506





# SPRING 2025 PLANT SALE



STARTING APRIL 1ST

PURCHASE ONLINE AT:  
[LIBERTYHALL.ORG/MUSEUMSTORE](http://LIBERTYHALL.ORG/MUSEUMSTORE)

**KENTUCKY COOPERATIVE EXTENSION**  
UK MARTIN GAYTON COLLEGE OF AGRICULTURE, FOOD AND ENVIRONMENT  
KSI COLLEGE OF AGRICULTURE, HEALTH AND SAFETY RESOURCES

# Farm City Field Day

# 07.10.25

5 pm - 8 pm

## SAVE THE DATE & TIME





# 2025 MARKET SEASON

## WINTER MARKETS



10:00am-11:30am  
3/8, 3/22, 4/5, 4/19

## OPENING DAY OF REGULAR SEASON



April 26th 8:30am-Noon

## THURSDAY PRE-ORDER/ CURBSIDE DELIVERY



April 24th-November 20th 8:30am-10:00am  
[www.fcmarket.localfoodmarketplace.com](http://www.fcmarket.localfoodmarketplace.com)

## TUESDAY MARKET



May 13th- September 23rd 8:30am-Noon

## HOLIDAY MARKET



December 13th 10am-1pm



## KIDS DAYS

April 26th & 2nd Saturday of each month

5/10, 6/14, 7/12, 8/9, 9/13, 10/11, 11/8, 12/13



[www.franklincountyfarmersmarket.org](http://www.franklincountyfarmersmarket.org)

# Seed Day

Help us grow the Community garden! Join us for free seed starting workshops. All ages welcome. Children must be accompanied by an adult. More garden programs coming soon!

February 24

March 10

March 31

April 21

5-6:00PM

### Community Garden

Thorn Hill Education Center  
700 Leslie Avenue, Frankfort



at the Community Garden at *Thorn Hill Education Center*



WANDA JOYCE ROBINSON FOUNDATION



# FRANKLIN COUNTY SPRING CLEAN 2025



## DUMPSTER DAY

Saturday, April 19  
from 730 AM - 230 PM  
At the following locations



Old Peaks Mill School  
Evergreen Road Fire Station  
Bald Knob Fire Station  
Owenton Road Fire Station  
Lakeview Park

Anyone found dumping outside these hours may be held liable for illegal dumping

## HOUSEHOLD HAZARDOUS WASTE COLLECTION

Saturday, April 19  
from 8 AM to 12 PM  
At 309 Rouse Avenue

Accepted Items include:

Poisons, herbicides, batteries, aerosol cans, propane/helium canisters, oil-based paint, solvents/gasoline/thinners, antifreeze, fluorescent tubes, fire extinguishers, adhesives, asbestos, corrosive acids/bases/cleaners, dioxins, fertilizers, organic peroxides, reactive solids, oxidizers, flammable solids, mercury, freon/acetylene, electronics (including TVs!)

We will NOT accept:  
water-based paints,  
motor/hydraulic  
oil, or medications

## SCRAP METAL COLLECTION

With the Franklin County Conservation District at Lakeview Park  
Thursday - Saturday  
4/17-4/18 from 8 AM to 430 PM  
4/19 from 8 AM to Noon



## LANDFILL DISPOSAL

Voucher needed to dump at the landfill on Saturday.  
Sign up for free at [www.franklincounty.ky.gov/trash-vouchers](http://www.franklincounty.ky.gov/trash-vouchers)

## YARD WASTE WEDNESDAY

Begins 4/23 and runs every Wednesday through 11/5  
8 AM to 12 PM at the Road Dept: 100 Lewis Ferry Rd



**FOR MORE INFORMATION, CHECK OUT OUR WEBSITE:  
[WWW.FRANKLINCOUNTY.KY.GOV/SOLID-WASTE-MANAGEMENT](http://WWW.FRANKLINCOUNTY.KY.GOV/SOLID-WASTE-MANAGEMENT)**





# Vegetable gardener's calendar for Central Kentucky

**I:** Start seeds indoors **M:** Move transplants to garden **O:** Start seeds outdoors

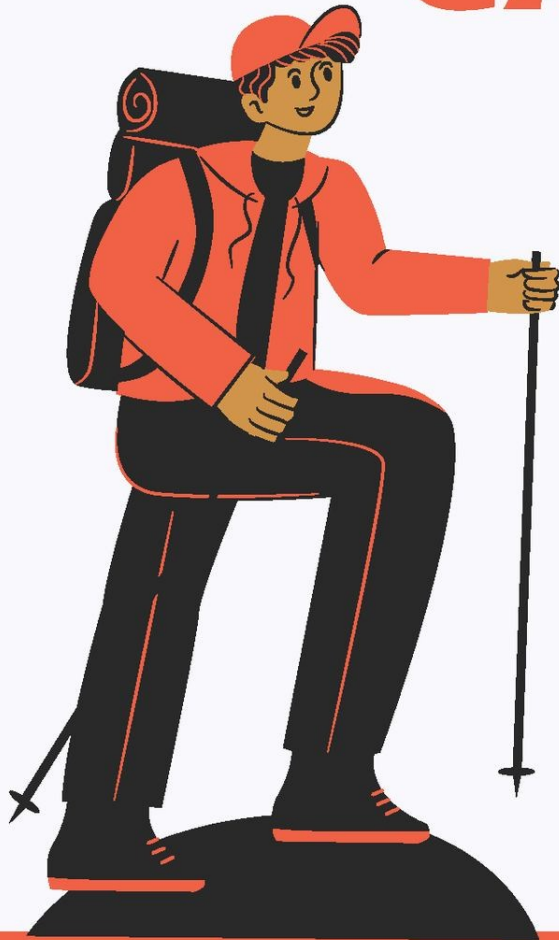
<b>Jan. 25</b>	I	Onions
<b>Feb. 11</b>	I	Brussels sprouts
<b>Feb. 25</b>	I	Broccoli, cabbage, cauliflower, kohlrabi, lettuce, Chinese cabbage
<b>Mar. 11</b>	O	Spinach, mustard, beets, peas, edible podded peas
<b>Mar. 25</b>	M	Cabbage, kohlrabi
	O	Asparagus and rhubarb (crowns), beets, carrots, collards, kale, mustard, spinach, peas, edible podded peas, early potato seed pieces, radishes, turnips, green onions, onion sets, endive
<b>WE ARE HERE!!</b>	I	Peppers, tomatoes, eggplant, sweet potato slips. Dig and divide any 4-year-old rhubarb plants. Fertilize asparagus and rhubarb with 1 lb 5-10-10 per 100 sq ft.
<b>April 11</b>	M	Broccoli, cauliflower, collards, lettuce, Chinese cabbage, Swiss chard, onions from seeds
	O	Mustard, spinach, radishes, lettuce, Swiss chard
<b>April 15</b>	I	Muskmelons, watermelons, squash
	O	Sweet corn, beets, carrots, mustard, spinach, radishes, lettuce
<b>May 11</b>	O	Sweet corn, mustard, radishes, lettuce
<b>May 17</b>	O	Green beans, lima beans
	M	Tomatoes, muskmelons, watermelons, squash





**HIKE! EXPLORE! LEARN!**

# **OUTDOOR ADVENTURE CAMP**



**Get together with friends and  
learn outdoor survival skills!  
Scan below for the  
application!**



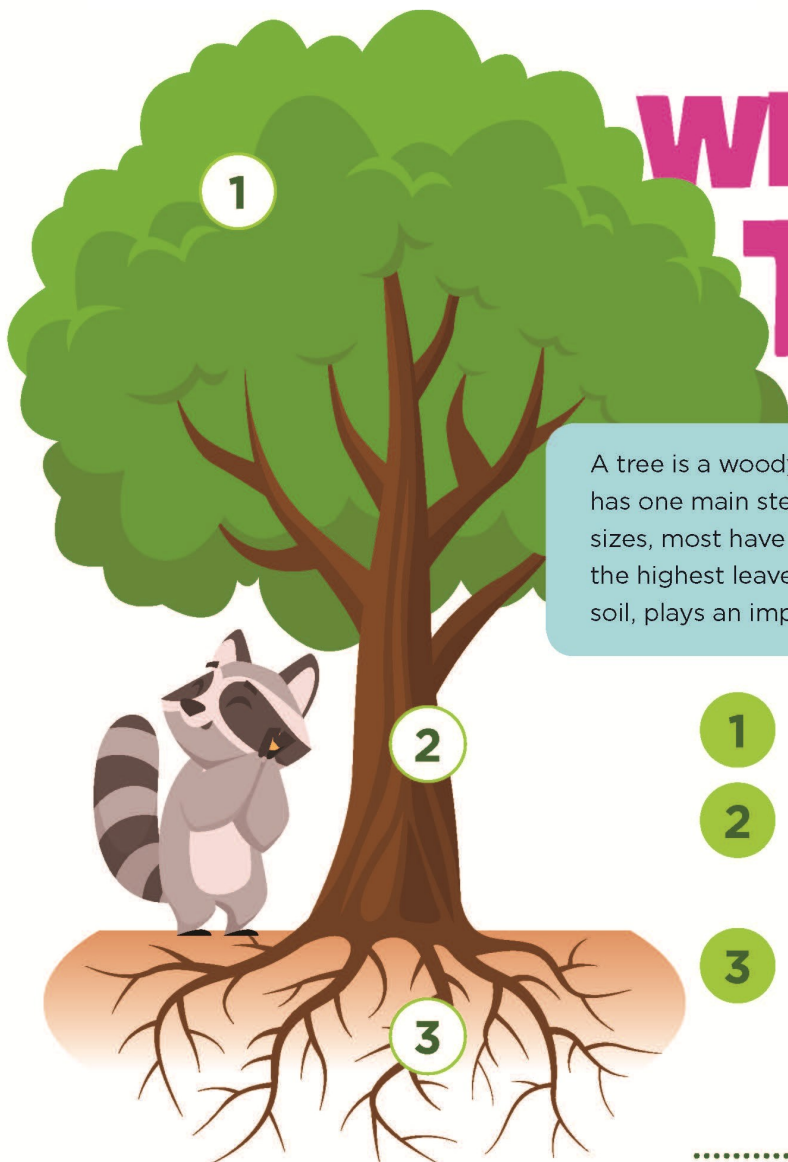
**MAY 2-3, 2025  
STARTS AT 1 PM  
\$100 PER PERSON  
REGISTER WITH YOUR  
COUNTY 4-H AGENT**

**LAKE CUMBERLAND 4-H CAMP  
17500 KY-196  
NANCY, KY 42544**

**OPEN FOR KIDS AGED 13 AND UP.  
THE TEAM OF SKILLED PROFESSIONALS ENSURE  
ALL KIDS ARE SAFE 24/7.**



# What Is A TREE?



A tree is a woody plant that's usually more than 10 feet tall and has one main stem. Although trees come in different shapes and sizes, most have the same basic parts. Each of these parts, from the highest leaves in the crown to the tiny root hairs buried in the soil, plays an important role in the tree's function and survival.

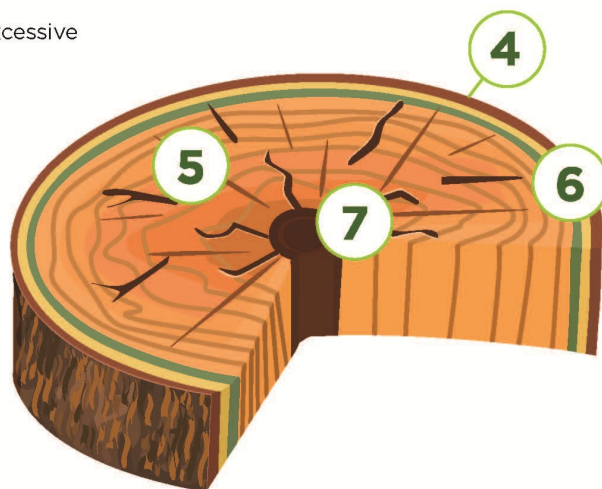
- 1 The **crown** of the tree is made up of the leaves and branches.
- 2 The **trunk** of the tree supports the crown and serves as a highway for food made in the leaves to travel to the roots and for water and nutrients from the roots to travel to the leaves.
- 3 The **roots** of the tree support the trunk and crown and also anchor the tree in the soil. They serve as a storage facility during the winter for the food produced by the leaves during the growing season. The roots also absorb water and nutrients from the soil for use by the tree.

4 The **bark** layer protects the tree from insects and disease, excessive heat and cold, and other injuries.

5 In the **xylem** (sapwood) layer, tree sap (water plus nitrogen and mineral nutrients) is carried back up from the roots to the leaves. Sapwood gives a tree its strength. In the phloem (inner bark) layer, sugar that's made in the leaves or needles is carried down to the branches, trunks, and roots, where it's converted into the food (starch) the tree needs for growth.

6 The **cambium** is a layer or zone of cells, one cell thick, inside the inner bark. The cambium produces both the xylem and phloem cells. This is where diameter growth occurs and where rings and inner bark are formed.

7 The **heartwood** of the tree develops as the tree gets older. It's old sapwood that no longer carries sap and gives the trunk support and stiffness. In many kinds of trees, the heartwood is a darker color than the sapwood since its water-carrying tubes get clogged up.





**March 14, 2025**  
**\$25 per person**  
**5:30 p.m.**

**Register by March 10, 2025**  
**Supplies and refreshments included.**  
**Space is limited.**  
**101 Lakeview Court**  
**502-695-9035**



## Lean Green Lettuce Tacos

- |   |   |   |
|---|---|---|
| <b>8</b> large lettuce leaves                       | <b>¾ pound</b> extra lean ground beef           | <b>1 tablespoon</b> finely chopped cilantro |
| <b>1½ cup</b> cooked brown rice                     | <b>1</b> small zucchini, chopped                | <b>1 teaspoon</b> lime juice                |
| <b>¾ cup</b> fresh corn kernels                     | <b>1 ounce</b> packet low-sodium taco seasoning | <b>1</b> tomato, chopped                    |
| <b>1 cup</b> canned black beans, drained and rinsed | <b>4 ounces</b> low sodium tomato sauce         | <b>1</b> small red onion, chopped           |
| <b>1 tablespoon</b> olive oil                       |   |   |

**Wash and dry** lettuce leaves. **Prepare** rice according package directions. **Cut** corn off cob. **Drain and rinse** black beans. In a skillet, **heat** the oil to medium; **add** ground beef and begin to **cook**. When beef begins to brown, **add** zucchini, corn and black beans to skillet. Continue to **cook** until vegetables are tender and beef is done. Do not overcook. **Add** in taco seasoning and tomato sauce and heat through. **Add** cilantro and lime

juice to the cooked rice. **Place** equal amounts of rice mixture and taco mixture into lettuce leaves. **Top** each taco with chopped tomato and onion.

**Yield:** 8 servings

**Nutritional Analysis:** 180 calories, 4.5 g fat, 1 g saturated fat, 20 mg cholesterol, 350 mg sodium, 23 g carbohydrate, 4 g fiber, 5 g sugars, 12 g protein.

  
Adam Leonberger

### Cooperative Extension Service

Agriculture and Natural Resources  
Family and Consumer Sciences  
4-H Youth Development  
Community and Economic Development

### MARTIN-GATTON COLLEGE OF AGRICULTURE, FOOD AND ENVIRONMENT

Educational programs of Kentucky Cooperative Extension serve all people regardless of economic or social status and will not discriminate on the basis of race, color, ethnic origin, national origin, creed, religion, political belief, sex, sexual orientation, gender identity, gender expression, pregnancy, marital status, genetic information, age, veteran status, physical or mental disability or reprisal or retaliation for prior civil rights activity. Reasonable accommodation of disability may be available with prior notice. Program information may be made available in languages other than English. University of Kentucky, Kentucky State University, U.S. Department of Agriculture, and Kentucky Counties, Cooperating. Lexington, KY 40506



  
Disabilities accommodated with prior notification.